

**DYNATECT**<sup>TM</sup>  
DYNAMIC EQUIPMENT PROTECTION

# GORTITE<sup>®</sup> ALUMINUM ROLL-UP DOORS

SAFE, SECURE ACCESS FOR EQUIPMENT COMPARTMENTS



Global Leaders in Dynamic Protection for Equipment and People

# FEATURES & BENEFITS

## GORTITE® ROLL UP DOORS

### INSTALLATION BENEFITS

- **Perfect Fit:** Firetrucks and work truck compartment sizes often vary significantly. Dynatect provides custom roll up doors to the exact specification of the truck design. Dynatect can be the single source for fit / form / function. Choose from several one-piece side rail options, with option mounting holes predrilled free of charge.
- **Easy Installation:** Dynatect's doors use standardized parts that are configured for the specific installation and can be installed quickly for consistent, reliable field operation. Dynatect also provides the doors as individual parts or as an assembled drop-in assembly (door and frame pre-assembled).
- **Easy Retrofit:** Dynatect has standard and custom offerings, including options to replace swing-out doors with pre-packaged roll-up door assemblies.



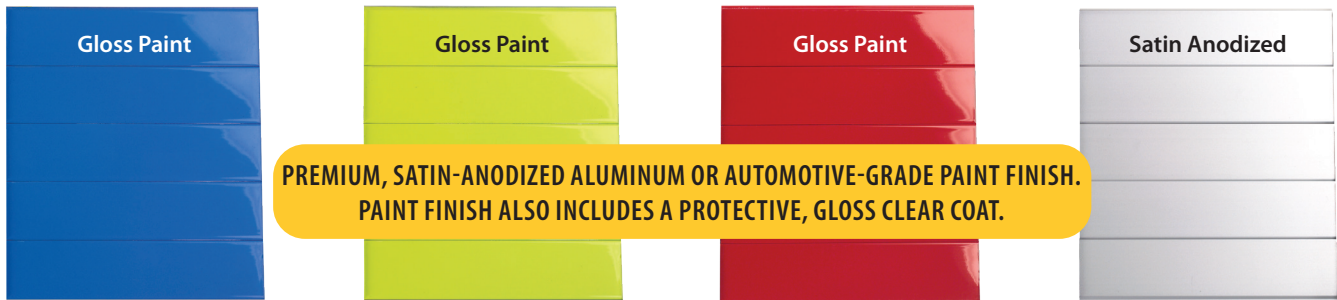
EASY, BOLT-IN  
INSTALLATION AND  
RETROFIT SOLUTIONS  
FOR SWING-OUT DOORS.



## PREMIUM APPEARANCE & BRAND APPEAL

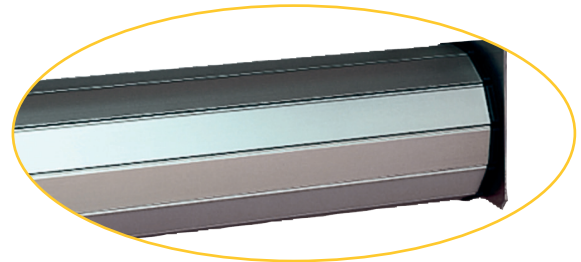
- **Brand Enhancement:** Dynatect's doors feature a smooth, satin anodized aluminum finish. Automotive-grade custom paint finishes are also available to precisely match your vehicle. Either finish complies

with automotive grade UV stability and supports the addition of brand/logos with excellent decal adhesion. Parade-quality finish.



## SECURE STORAGE & CARGO BENEFITS

- **Maximize Cargo Space:** Dynatect's small slat height allows the door to be fully contained in a small rolled up space, consuming minimal overhead while maximizing opening height, operator room and cargo space.
- **Protect From Leaking:** The "G-Rib" design also has a co-extruded seal that rests up against the adjacent rib creating a weather-tight seal when the door is closed.
- **Convenient Cargo Access:** Dynatect's doors feature a stainless-steel lift bar specifically designed for easy use by operators who may be wearing gloves.
- **Protect From Tampering:** Dynatect roll up doors feature slats with double-sided aluminum extrusions which are tamper resistant. The ideal balance of minimizing weight, while maximizing durability and security. Door locks and power door locks are optional.



**Lightweight, Corrosion-Resistant Anodized Aluminum Slats**  
Rugged, double-walled slat construction with weather sealing between each slat.



### Stainless Steel Lift Bar

Easy grip stainless steel lift bars withstand force and speed for opening the door.



**RIB DESIGN  
MINIMIZES CAR-  
GO HANG-UPS**

# FEATURES & BENEFITS

## GORTITE® ROLL UP DOORS



### SAFETY BENEFITS

Roll up doors minimize the footprint of the vehicle and keep the operator closer, reducing damage, injuries, and workers' compensation costs. Here's how:

- **Pinch Point Safety:** Dynatect's roll up doors feature slats that are 1-3/8" tall and closely coupled together which eliminates the pinch points of a traditional paneled roll up door. Roll up doors also eliminate the hinged pinch points of swing-out doors.
- **Impact Safety:** Swing-out doors create impact hazards in the presence of traffic, bicycles, pedestrians, street signs and trees. They create the additional challenge of forcing operators to walk around the door in the presence of these hazards.
- **Reduce Operator Strain:** Help reduce risk of injury and fatigue with convenient access doors that roll open. Dynatect's spring roller technology includes calibrated tension that ergonomically balance the door for least effort opening and closing force. Tall doors can optionally include a pull strap to accommodate closing while the operator is standing on the ground, regardless of truck height.
- **Improve Safety on Slopes:** Traditional "swing-out doors" can fight the operator when vehicle is parked on steep slopes. Under these conditions, gravity makes the doors less controllable when opening, or not staying open, depending on which direction of the vehicle is parked. In contrast, Dynatect's roll up door changes the direction of door motion and is spring tensioned to provide consistent performance regardless of how vehicle is parked on a slope. The roll up door will not accidentally move in response to parking on steeply sloped streets.

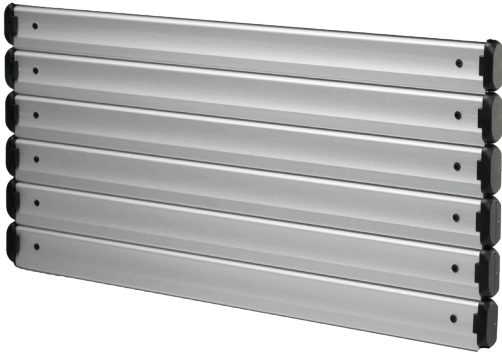


**Pull Strap**  
Ideal for tall doors

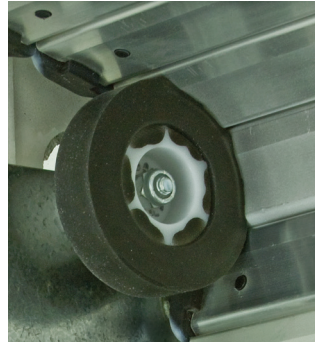


**VEHICLE BENEFITS**

- **Lightweight Materials:** Dynatect's aluminum slats are formed hollow core, with the industry's thinnest walls resulting in the lowest weight-to-rigidity ratio.
- **Durability:** Life cycle tested to 250k open/close cycles with 20 years of field-proven weather resistance. Design eliminates metal-on-metal contact which reduces premature wear and supports longevity. Seals are made of Santoprene, which has a high resistance to UV's and adjusts to both extreme cold and hot temperatures.
- **Noise Dampening:** All Dynatect roll up doors include an idler wheel or idler roller. This provides a foam-covered surface that dampens noise and vibration.



**Lightweight, Corrosion-Resistant Anodized Aluminum Slats**



**Idler Wheel / Idler Roller**  
Foam-covered surface dampens noise and vibration



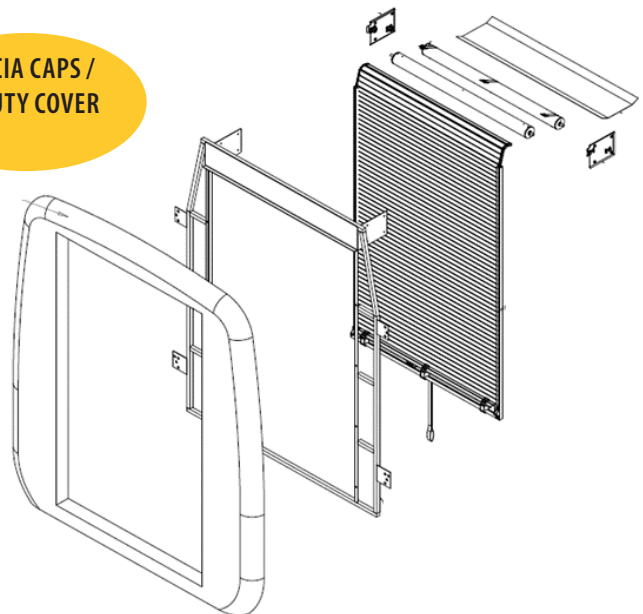
**Santoprene Seal**  
UV-resistant weather seal

**DELIVERY VEHICLE PRODUCTIVITY BENEFITS**

- **Optimize Access Locations:** Dynatect supports both rear roll up doors and side roll up doors that speed loading and unloading.
  - **Automation Available:** Dynatect offers custom roll up doors with remote controls to reduce operator repetitive motions and speed each delivery with advanced open and post close while the operator is executing deliveries.
- Traditional swing out-doors cannot be easily automated would require multiple actuators to open both doors.
- Curved rails and roller positions are available to provide that provide squared or contoured fit with existing designs.
  - Dynatect can provide custom beauty-cover to close exterior gaps, and fascia caps to cover external mounting locations.



**FASCIA CAPS / BEAUTY COVER**

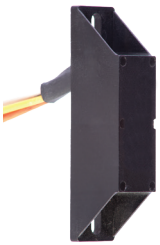
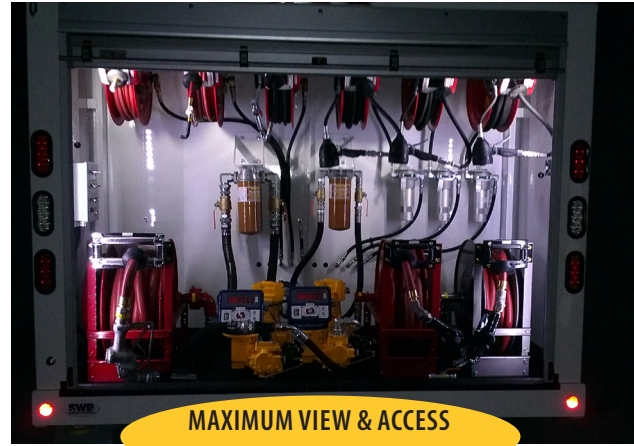


# OPTIONS

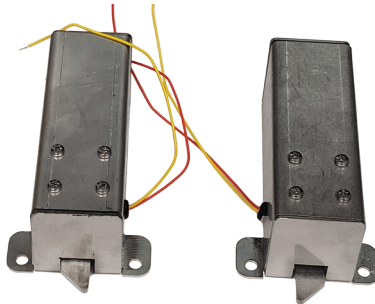
## GORTITE® ROLL UP DOORS

### OPTIONS

- Standard industry options include see through slats, door ajar switches, power locks, lift bars, handles, manual locks, power locks, drip rails, and sill plates.
- For high-volume standardized applications, Dynatect creates engineered solutions that further reduces installation time, labor, and cost. This can include bolt-in installation designs that include the rails, slatted doors, and just four vehicle connection points. Design like this can support under one-minute installation in high-volume OEM environments and allows for field/depot replacement with minimal time/tools required.



**Magnetic Door Ajar Switch**  
Allows operator to know instantly if door is not securely closed



**Power Locks**  
Compact design with keyed manual override in the event of a power failure



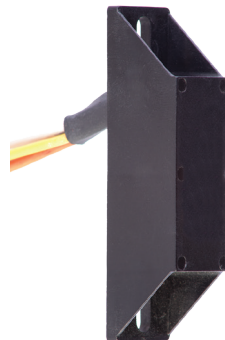
**Manual Key Lock**  
Multiple key formats available. Heavy-duty locks available for large doors.



**Inside Opening Lift Bar**  
Option for opening / closing from cargo side of door



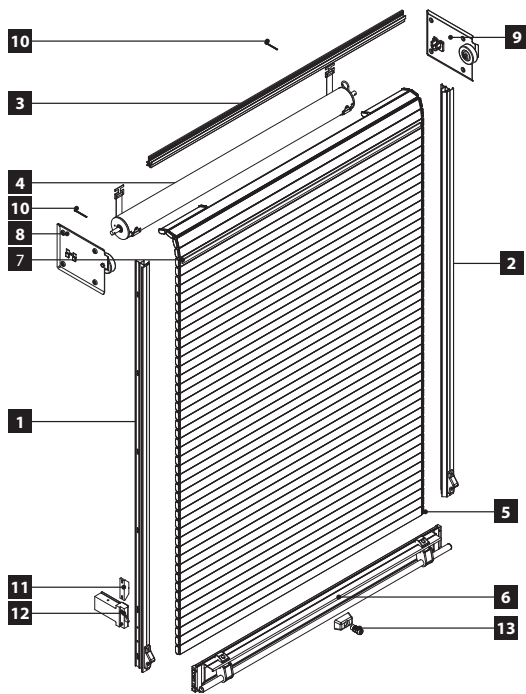
**See-Through Slats**  
Transparent, rugged polycarbonate material



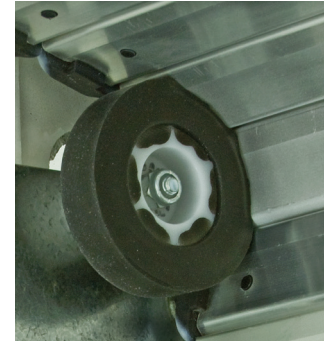
**Magnetic Door Ajar Switch**  
Allows operator to know instantly if door is not securely closed.

# STANDARD COMPONENTS

## GORTITE® ROLL UP DOORS



DESCRIPTION	QTY.
1 Side Rail, Left	1
2 Side Rail, Right	1
3 Top Rail	1
4 Roller	1
5 Shade	1
6 Handle Assembly	1
7 Door Seal Foam	1
8 Pennant Plate, Left	1
9 Pennant Plate, Right	1
10 Roller Pin	2
11 Door Ajar Switch	1
12 Power Door Lock	1
13 Manual Lock	1



**Idler Wheel / Idler Roller**  
Foam-covered surface dampens noise and vibration



Top Drip Rail (option)



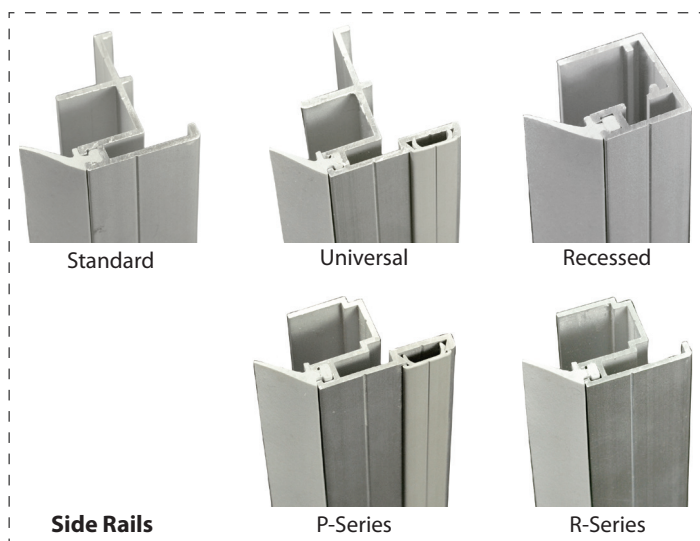
Sill Plates (option)



**Rugged Lift Bar**  
Easy grip stainless steel lift bars withstand force and speed for opening the door

### PARTNER SELECTION

- **Proven Partner:** Dynatect is the US market leader in roll-up doors for emergency vehicles – with 20 years of vehicle door experience and 100,000 installations. Dynatect has a 75-year history of making robust industrial, construction, and fire/emergency solutions.
- **Affordable:** For over 25 years, Dynatect has deployed lean principles to maximize product performance while managing costs.
- **Latest Technology:** Dynatect is always offering customers leading edge technology. Dynatect invests in new product development including power locks, custom handles, motorized doors, remote controls, materials technology, and water-mitigation.
- **Lifetime Warranty:** For the spring-loaded take-up roller



## HOW TO SPECIFY GORTITE® ROLL UP DOORS

### So, How Do I Specify Gortite® Roll-Up Doors? It's Easy!

- Roll-up doors shall be Gortite brand manufactured by Dynatect Manufacturing, Inc.
- Roll-up doors to be constructed of double-sided aluminum extrusions. The extrusions are to be 1-3/8" tall and 3/8" thick with satin anodized finish or painted to match truck body.
- A flexible extrusion shall be installed between each slat to ensure a weather-tight seal
- Aluminum extrusions shall be individually replaceable without disassembling the entire door by removing push out clips on each end
- Side channels for the door to ride in shall be provided with seals to prevent dirt and moisture from entering compartment. A single piece top drip rail shall be provided with a seal to prevent dirt and moisture from entering the compartment when the door is fully closed. Bottom of door will also be provided with a seal.
- All non-metallic parts to be glass-filled nylon
- Lift bar shall be made of stainless steel
- The door shall be capable of operating in temperatures of -40° F to 180° F
- Optional accessories shall include a magnetic door ajar system, compartment lighting, manual key lock, power lock, sill plate and pull strap for tall doors

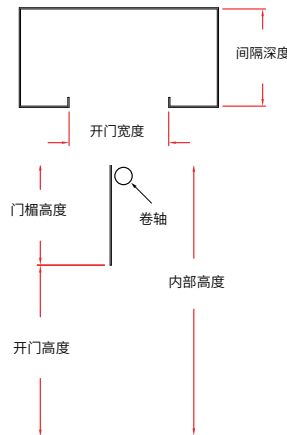
### Our Lifetime Roll-Up Door Warranty

The roll-up doors have the following warranties to be free from defects in materials and workmanship:

- Lifetime for the spring-loaded roller
- 3 years for all other parts
- 5 years for optional painted finish (free from peeling or blistering)
- 1 year for optional electronic equipment
- Warranties are from date of shipment and apply to the original owner
- Damage due to accidents or external causes are not warranted

DOOR OPENING HEIGHT	MINIMUM COMPARTMENT DEPTH	HEADER HEIGHT*	MAXIMUM ROLL-UP DIA.
up to 25"	10.000"	2.500"	5.375"
> 25" up to 35"	10.500"	2.500"	6.000"
> 36" up to 50"	11.500"	3.250"	7.250"
> 51" up to 60"	11.875"	3.875"	7.750"
> 61" up to 70"	12.375"	4.250"	8.250"
> 71" up to 90"	13.500"	5.375"	9.375"
> 91" up to 104"	14.125"	6.500"	10.500"

\*Minimum header height is 2.50". Header heights shown can be used to better hide the rolled up door but are not necessarily required.



DOOR OPENING WIDTH	MAXIMUM INTERNAL HEIGHT
18"	30"
19"	40"
20"	56"
21"	60"
22"-27"	90"
28"-32"	100"
33"-78"	110"

## CONTACT

### THODACON MACHINE TOOL PROTECTION CO LTD

Lu-Ou Road No. 43, Hudai Industrial Par  
Bin District, Wuxi 214161  
Jiangsu Province, China

Tel.: +86 5108 3291 518

Fax: +86 5108 3291 598

E-Mail: sales@thodacon.cn

DYNATECT.DE